

SONY



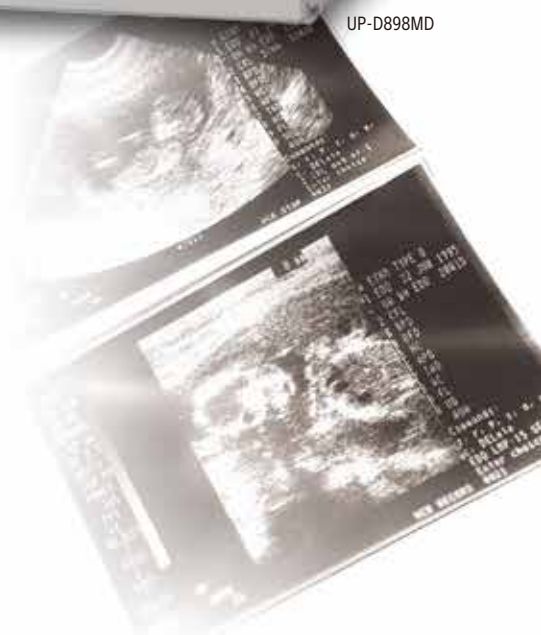
UP-D898DC



UP-D898MD



UP-X898MD



UP-X898MD

Hybrid Graphic Printer

UP-D898MD

Digital Graphic Printer

UP-D898DC

Digital Graphic Printer



The UP-X898MD/UP-D898MD/UP-D898DC are compact medical grade black and white digital printers designed to be integrated into both analog and digital medical imaging environments such as mobile C-arm, cardiac catheterization laboratory and digital ultrasound systems. The high quality thermal print engine can produce hard copy prints of still images captured by these systems for use in patient records and referrals.*

These models are capable of delivering high-quality black & white prints in less than two seconds. Advanced thermal printing technology delivers photo quality results using widely available Sony's print media.

These printers are successors to the popular Sony UP-897MD and UP-D897 of medical printers. Redesigned and upgraded, it offers several operational and ergonomic enhancements while retaining the same space-saving footprint and easy integration into medical carts. Usability is further enhanced by an enlarged LCD display panel and joystick for intuitive menu navigation.

For even greater convenience, printed still images can also be stored to a connected USB flash drive.**

* The images printed from the UP-X898MD/UP-D898MD/UP-D898DC are not to be used for diagnosis.

** This feature is only available on the UP-X898MD.

Products Overview

	UP-X898MD	UP-D898MD	UP-D898DC
Roll Paper Width	110 mm (4 3/8 inches)		
USB Flash Drive Storage	●		
Analog Video Input	●		
USB Connector (For medical device connection)	●	●	●
AC Input	●	●	
DC Input			●



UP-X898MD



UP-D898DC

Key Features of UP-X898MD/UP-D898MD/UP-D898DC

High quality printing

Advanced thermal printing technology enables photo-quality black & white prints with a high resolution up to approximately 325 dpi and grey levels up to 256 steps.

A6 prints in less than two seconds

While operating in high speed mode, these printers can produce A6-size prints in approximately 1.9 seconds (when used with UPP-110HG or UPP-110S print media).

Uses widely available print media

Sony offers a choice of three high quality, widely available thermal print media types to meet the needs of different applications. Choose from the UPP-110HD, UPP-110S, or the UPP-110HG High Glossy Printing Paper that produces glossy, long-lasting near-photo quality prints.

Compact, space-saving design

These printers have the same space-saving design as the predecessors for easy, flexible integration into medical carts.

Wide PC compatibility

For maximum flexibility, a wide range of PC drivers are provided for Windows XP, Vista, 7 and 8.

Enhanced operability

Building on the success of the popular UP-897MD and UP-D897, the these printers feature an enlarged LCD panel that displays printer settings, selected paper type and advisory messages. An intuitive joystick control allows speedy menu navigation, while the new Auto Lock mode prevents unintentional changes to print settings.

Volume Knob

Joystick (Menu lever)

LCD Panel



Front Panel

Hard copy reference of print settings

For convenient reference, selected settings (Brightness, Contrast, Gamma and Sharpness) can optionally be printed in a blank space on the print paper.

Quick guide print

Quick instruction guides for different print operations can be selected via the front control panel. They can be printed out for easy reference without needing to refer to the user manual.*1

*1 English only.

For more details, please contact your nearest Sony office or an authorized dealer.

Main Print Mode (Video input)

	Standard	Side
Normal (1 time)		
Small (0.5 times)		
Small (0.5 times, multi)		
2x zoom (2 times)		

Features of UP-X898MD

Accepts both digital input and analog video input

The UP-X898MD offers you to choice of analog composite video and digital inputs that allows flexible use with a wide range of modality devices.

USB flash drive storage

The UP-X898MD can automatically store printed images from both digital and video input.

Wireless Printing Capability*2

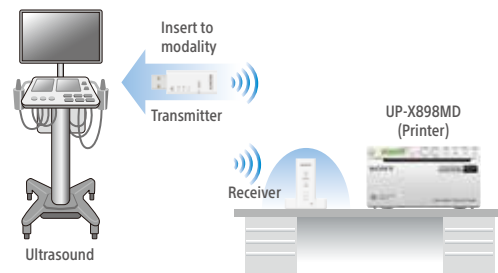
By using the optional UPA-WU10*3 Wireless Print System, you can achieve cable-free connection between the UP-X898MD, ultrasound systems, and other hospital imaging modalities with a compatible wireless capability.

This is ideal for busy clinical environments, where modalities are constantly being moved between different examination rooms and ORs. This all-in-one wireless printing solution also resolves the problem of limited space on medical carts, allowing the connection between a medical imaging modality and an 'off-cart' printer without requiring a lengthy USB cable.

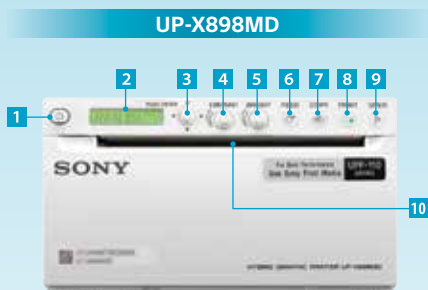
*2 This function is available on the UP-X898MD only with a USB 5V output port, manufactured in March 2017 or later. To check compatibility for wireless use, please contact your nearest Sony office or an authorized dealer.

*3 Product availability of the UPA-WU10 may vary depending on the sales area.

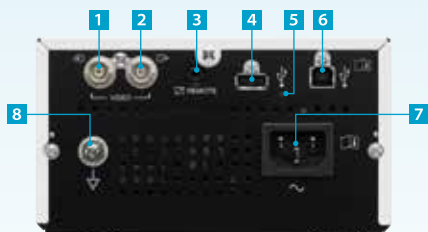
Use Case (Examination Room)



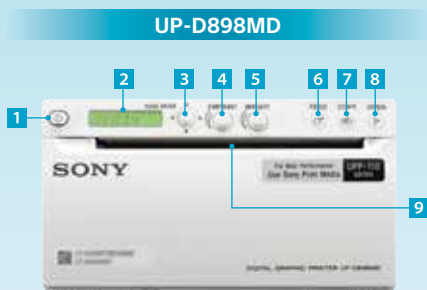
Front and Rear Panels



- 1 Power ON/OFF Switch
- 2 Printer window display (LCD: liquid crystal display)
- 3 Menu lever
- 4 CONTRAST control
- 5 BRIGHT (brightness) control
- 6 FEED button
- 7 COPY button
- 8 H PRINT button
- 9 OPEN button
- 10 Paper cutter



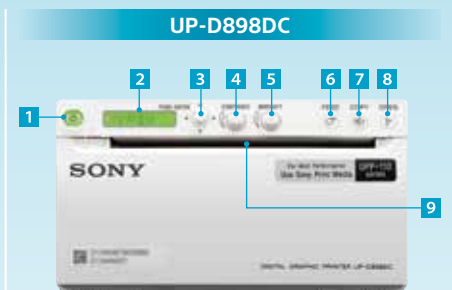
- 1 VIDEO input connector (BNC type)
- 2 VIDEO output connector (BNC type)
- 3 REMOTE (remote commander) connector
- 4 USB connector (type A)
- 5 USB connector (type A) lamp
- 6 USB connector (type B)
- 7 AC IN connector
- 8 Equipotential terminal



- 1 Power ON/OFF switch
- 2 Printer window display (LCD: liquid crystal display)
- 3 Menu lever
- 4 CONTRAST control
- 5 BRIGHT (brightness) control
- 6 FEED button
- 7 COPY button
- 8 OPEN button
- 9 Paper cutter



- 1 USB connector (type B)
- 2 Equipotential ground terminal connector
- 3 AC IN connector



- 1 ON/STANDBY switch
- 2 Printer window display (LCD: liquid crystal display)
- 3 Menu lever
- 4 CONTRAST control
- 5 BRIGHT (brightness) control
- 6 FEED button
- 7 COPY button
- 8 OPEN button
- 9 Paper cutter



- 1 DC IN connector
- 2 USB connector (type B)

Specifications

	UP-X898MD	UP-D898MD	UP-D898DC
Printing Method	Direct thermal printing		
Resolution	325 dpi		
Gradations	8 bits (256 levels) processing		
Picture Elements	Digital: 4096 x 1280 dots Video NTSC: 720 x 504 dots Video PAL: 720 x 604 dots	Digital: 4,096 x 1,280 dots	
Picture Area	Digital: 320 x 100 mm/12 5/8 x 3 7/8 inch (Max) STD Video NTSC: 94 x 73 mm, Video PAL: 94 x 71 mm (WIDE1) SIDE Video-NTSC: 124 x 96 mm, Video-PAL: 127 x 96 mm (WIDE1)	320 x 100 mm (12 5/8 x 4 inches)	
Paper Size	Paper width of 110 mm (4 3/8 inches)		
Printing Time	High-speed mode:		
	Approx. 1.9 seconds/image (at standard setting) (960 x 1,280 dots)		
	Normal speed mode:		
	Approx. 3.3 seconds/image (at standard setting) (960 x 1,280 dots)		
Picture Memory	Digital: 4,096 x 1,280 x 8 (bit) Video: 10 frame memories (850 k x 8 bits per frame)	Digital: 4,096 x 1,280 x 8 (bit)	
Interface	USB terminal (type A) for USB flash drive (x1) Hi-Speed USB (USB 2.0) (x1) VIDEO INPUT: BNC type (x1) NTSC or PAL composite video signals 1.0 Vp-p, 75 ohms (NTSC/PAL automatically discriminated) VIDEO OUTPUT: BNC type (x1) Loop-through REMOTE: Stereo mini jack (x1)	Hi-Speed USB (USB 2.0) (x1)	
Printer Driver Software	Microsoft Windows XP 32/64 bit, Vista 32/64 bit, 7 32/64 bit, 8 32/64 bit		
Power Requirements	AC 100 V to 240 V, 50/60 Hz		12V to 24V DC
Input Current	1.3 A to 0.6 A		8.2A to 3.7 A
Operating Temperature	5°C to 40°C (41°F to 104°F)		
Operating Humidity	20% to 80% (no condensation allowed)		
Storage and Transport Temperature	-20°C to +60°C (-4°F to +140°F)		
Storage and Transport Humidity	20% to 80% (no condensation allowed)		
Dimensions (W x H x D) *	154 x 88 x 240 mm (6 1/6 x 3 1/2 x 9 1/2 inches)		154 x 88 x 165 mm (6 1/6 x 3 1/2 x 6 1/2 inches)
Mass	2.5 kg (5 lb 8 oz)		1.8kg (3 lb 15 oz)
Supplied Accessories	Thermal head cleaning sheet (1), CD-ROM (1), Before Using this Printer (1), Service Contact List (1), USB Flash Drive Ex. Cable, Print media (UPP-110HG)	Thermal head cleaning sheet (1), CD-ROM (1), Before Using this Printer (1), Service Contact List (1)	Thermal head cleaning sheet (1), CD-ROM (1), Before Using this Printer (1), Service Contact List (1), European Representative (1)

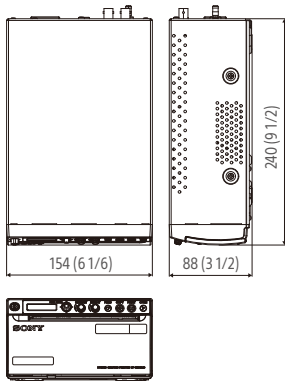
* The values for dimensions are approximate.

This product is distributed to the US (FDA) and EU (MDD) as a medical device and satisfies product safety standards (e.g. IEC 60601-1)**.

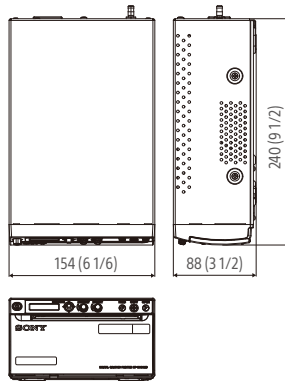
** For more details, please contact your nearest Sony sales office or an authorized dealer.

Dimensions

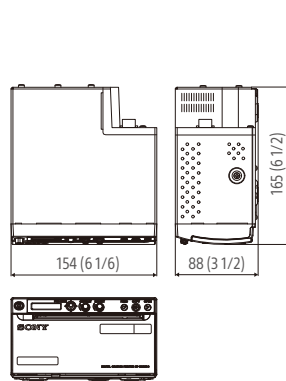
UP-X898MD



UP-D898MD

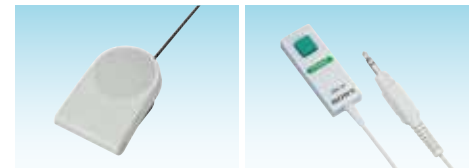


UP-D898DC



Unit: mm (inches)

Optional Accessories



FS-24
Foot Switch

RM-91
Remote Commander



UPA-WU10*
Consists of the
UPA-WU10T (Transmitter) and
UPA-WU10R (Receiver)
* Supported only by the UP-X898MD

Printing Paper



UPP-110HG
Thermal Print Media (High Glossy)
Paper size: 110 mm (W) x 18 m

UPP-110HD
Thermal Print Media (High Density)
Paper size: 110 mm (W) x 20 m

UPP-110S
Thermal Print Media (Normal)
Paper size: 110 mm (W) x 20 m

©2017 Sony Corporation. All rights reserved.

Reproduction in whole or in part without written permission is prohibited.

Features and specifications are subject to change without notice.

All non-metric weights and measurements are approximate.

Sony is a registered trademark of Sony Corporation.

All other trademarks are the property of their respective owners.

Please visit Sony's professional website or contact your Sony representative for specific models available in your region.

Distributed by